



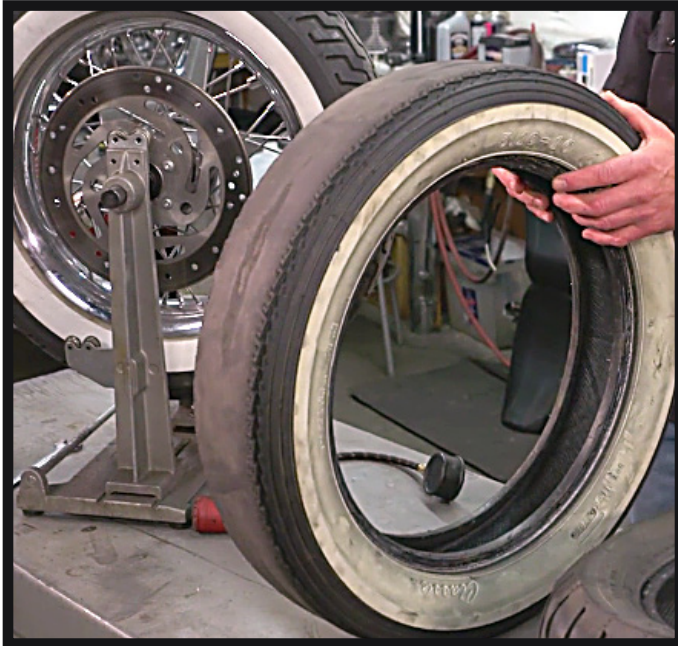
6 POSSIBLE CAUSES OF HARLEY® WOBBLE

There are a number of reasons why your motorcycle may wobble. Check out these six maintenance procedures you can perform to maintain or improve the rideability of your motorcycle.



6 POSSIBLE CAUSES OF HARLEY® WOBBLE

1. TIRES AND TIRE PRESSURE



The tire pressure and tire condition are probably the most overlooked area of a motorcycle. Running bald or damaged tires on a motorcycle is extremely dangerous. Check your tire pressure at least once a month. Better yet, check before every ride. When buying new tires, look for the date they were made. Put a hand on them and feel for any cupping.

2. WHEEL BEARINGS



Bad wheel bearings can cause a wobble. Sometimes you will be able to hear a failing bearing when coasting with no throttle and the clutch lever pulled in. Other times, you will have to remove a wheel and physically feel the bearing to determine whether or not it is bad. If your motorcycle has high mileage and bearings have not been replaced, plan to change bearings at your next tire change.



6 POSSIBLE CAUSES OF HARLEY® WOBBLE

3. BELT DEFLECTION



Incorrect belt deflection can adversely affect handling on your Harley Davidson®. Refer to the factory service manual for the correct spec for your year and model. Check your belt deflection when you check your lights and tire pressures during your pre ride inspection. Also check for correct shock air pressure for your load.

4. SPOKE ADJUSTMENT

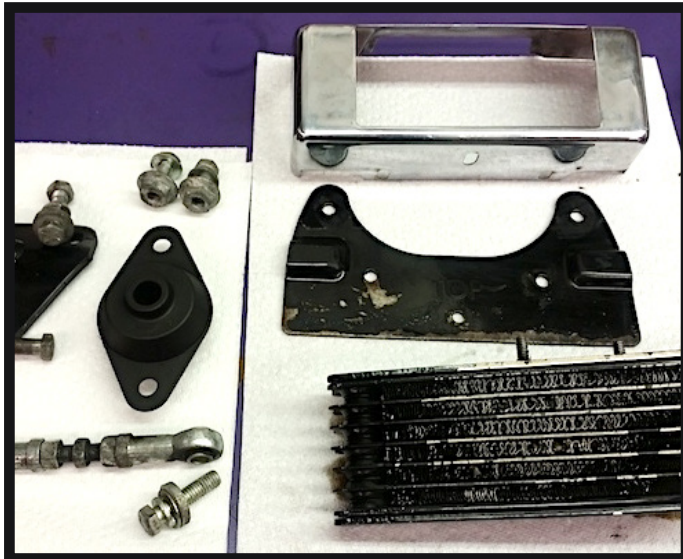


If your motorcycle has spoke wheels, spoke inspection and maintenance is very important. Loose spokes will not only adversely affect handling, but will also damage your wheel hub. If not maintained, lateral and radial rim run out will change and a wobble will occur.



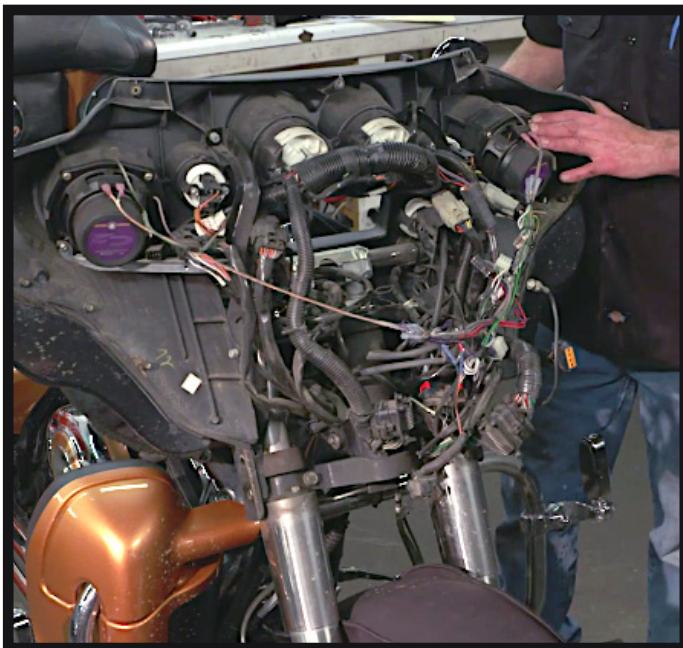
6 POSSIBLE CAUSES OF HARLEY® WOBBLE

5. FRONT MOTOR MOUNT



A worn or torn front motor mount can be the source of a wobble on a Harley Davidson®. The design had been very much the same until 2009. Three rubber mounts support the entire weight of the motor, transmission, and drive. Inspect your front motor mount whenever performing regular maintenance.

6. STEERING HEAD BEARINGS



Incorrect neck adjustment will cause wobble, on deceleration or at high speeds. A loose neck is the most common culprit of wobble after tires and wheels. You should never overlook neck inspection and adjustment, as it is an important point of a major service.

WRENCH MORE, WRENCH SAFE

For step-by-step instruction on each of these maintenance procedures, check out the [Fix Your Harley® Wobble](#) class on [FixMyHog.com](#).