



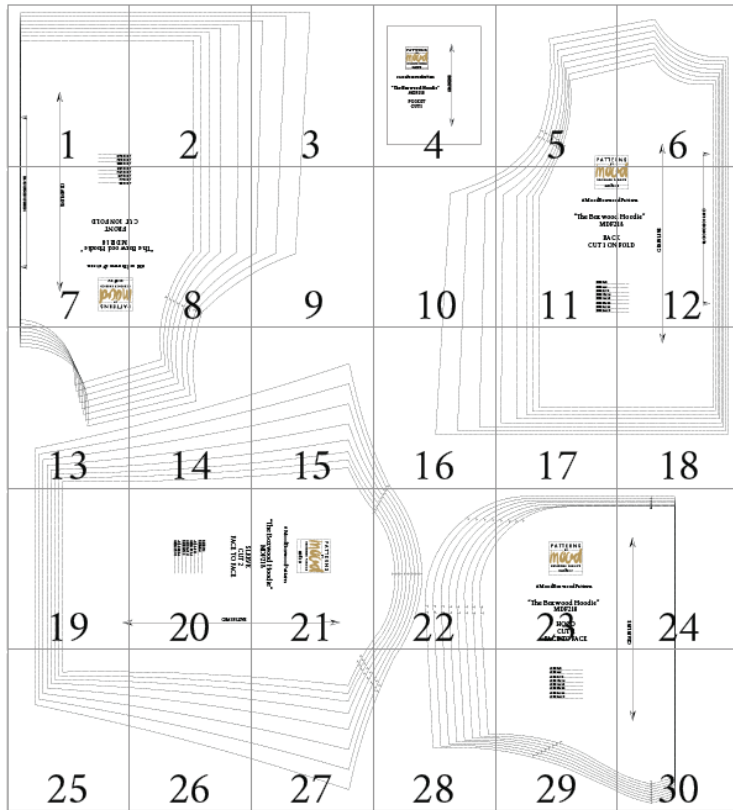
#MoodBoxwoodPattern

“The Boxwood Hoodie”

Sizes 0/2 to 28/30

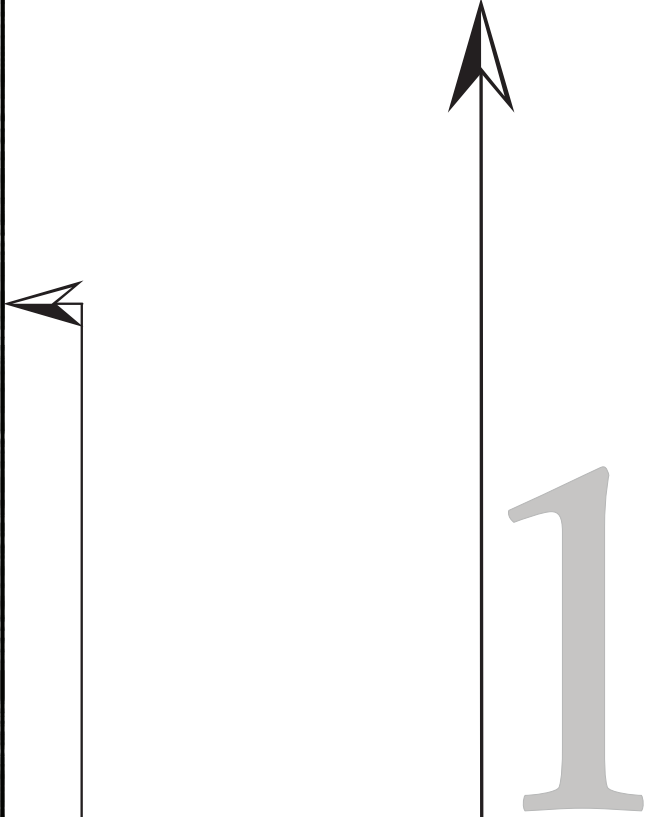
Stop!

Print just this page first to check accuracy.
The Mood square to the left should measure
2 inches. Print “actual size” (no scaling).

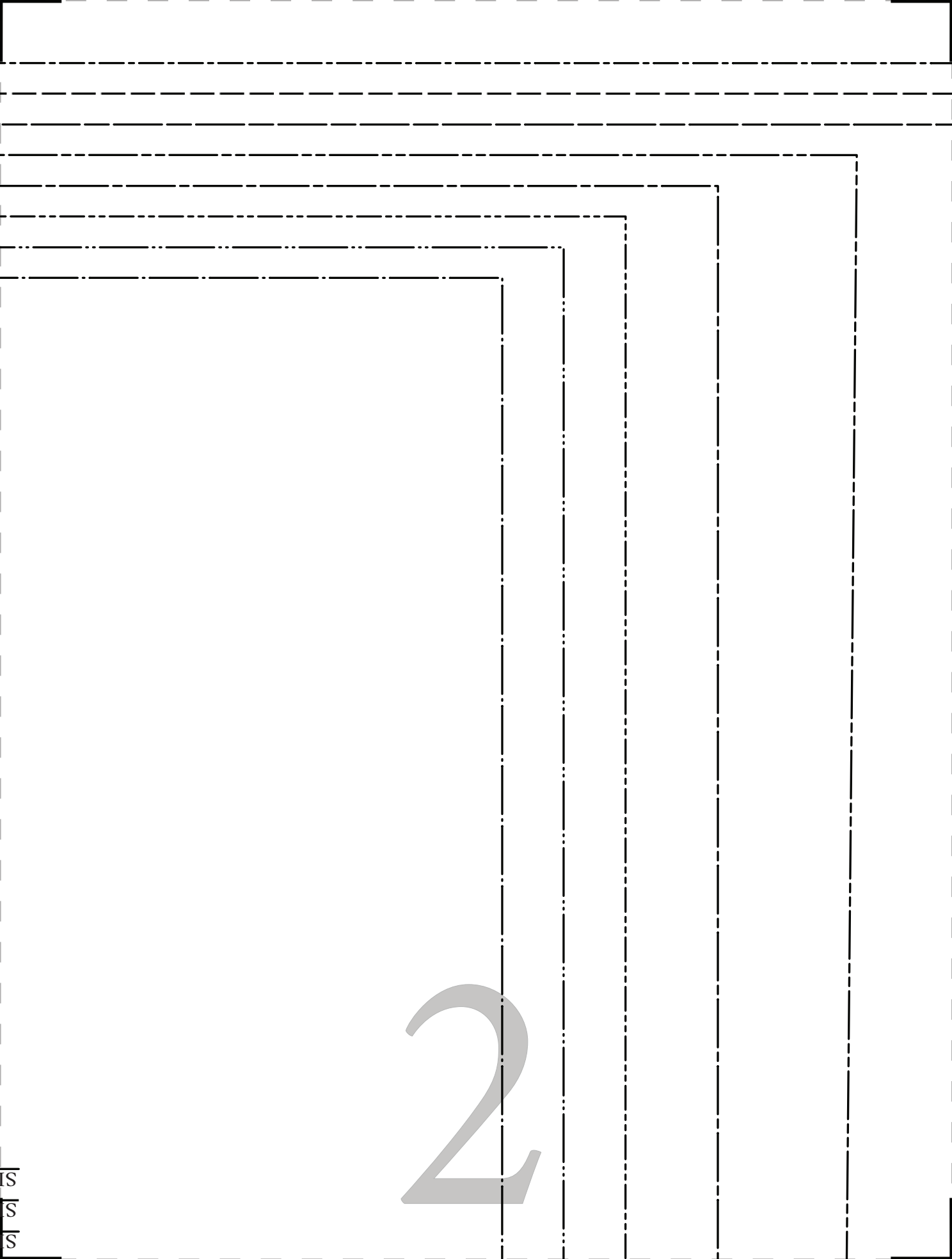


Handwriting practice lines consisting of a solid top line, a dashed midline, and a solid bottom line, repeated five times.

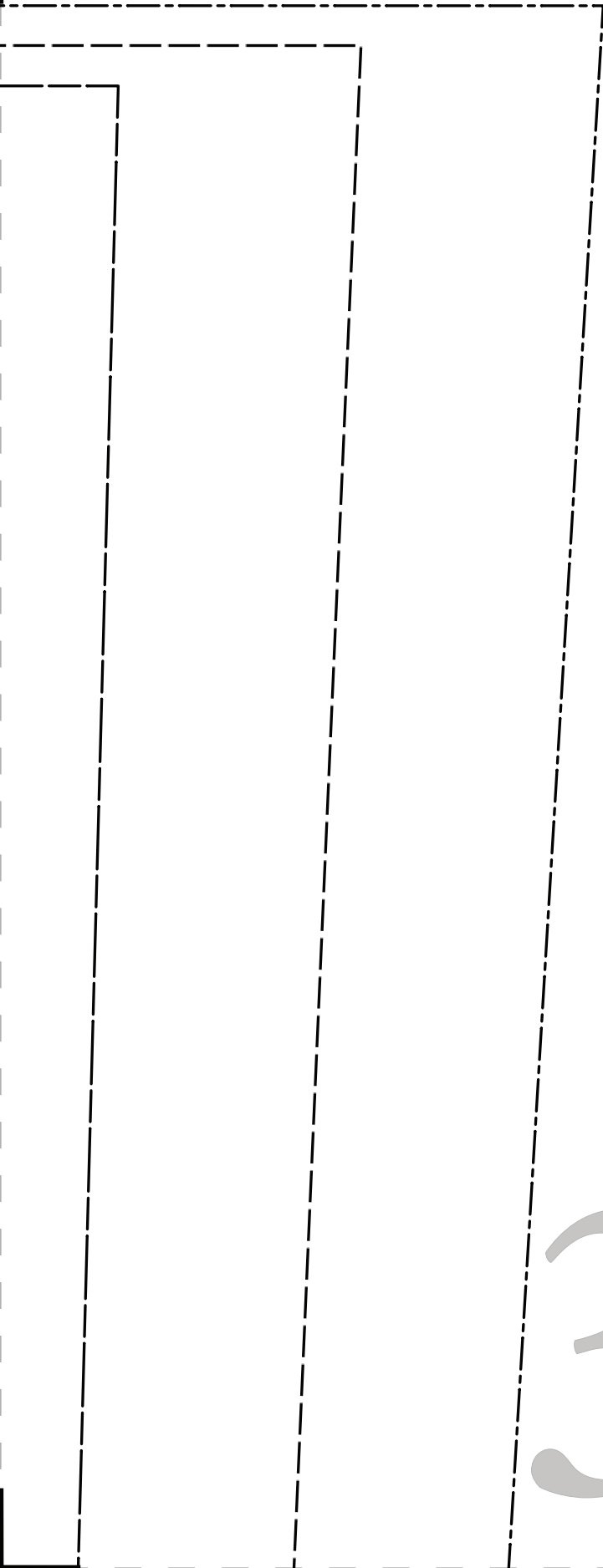
A large, empty rectangular area for handwriting practice, bounded by a solid top line, a dashed midline, and a solid bottom line.



ZE 20/22
ZE 24/26
ZE 28/30



2



3



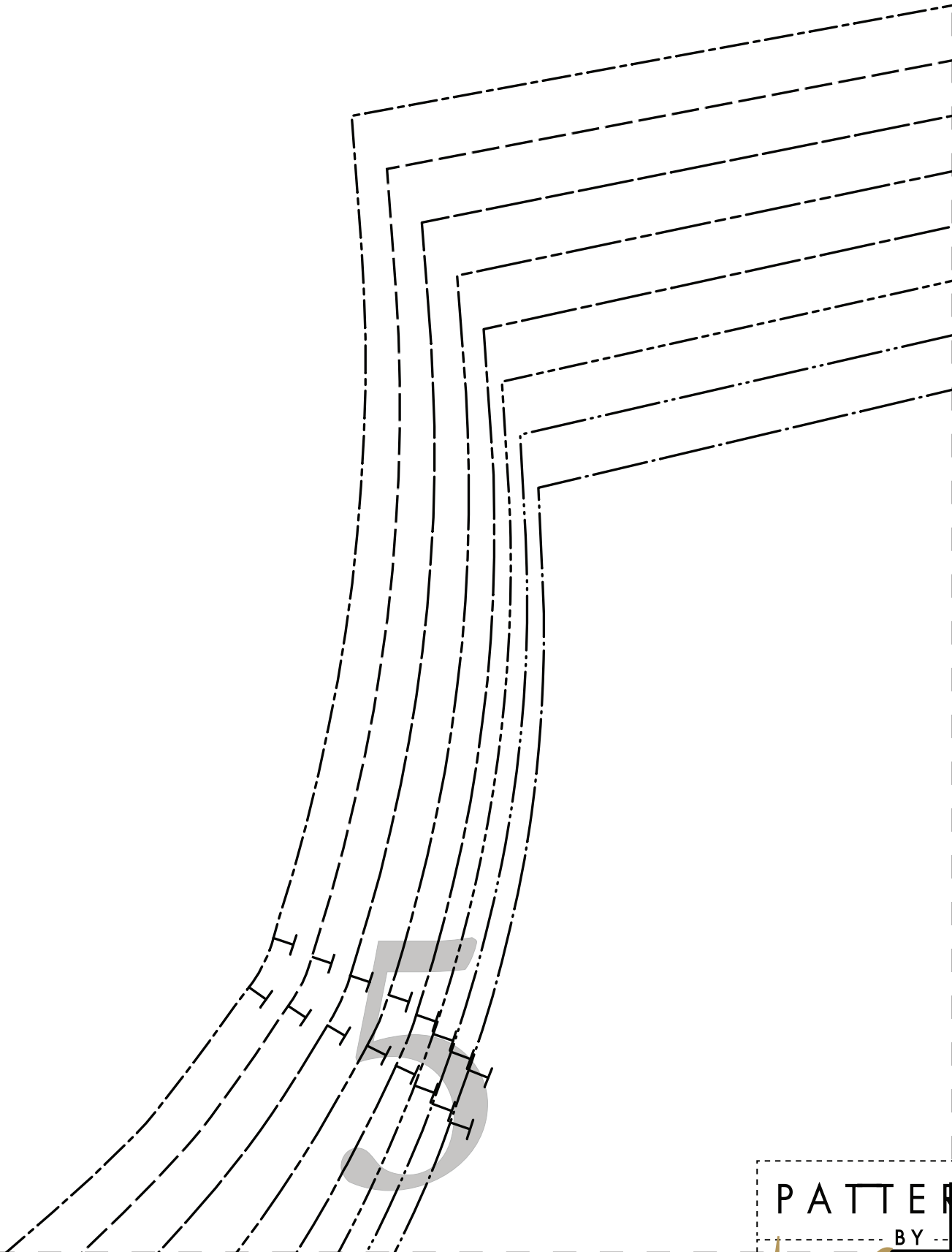
#MoodBoxwoodPattern

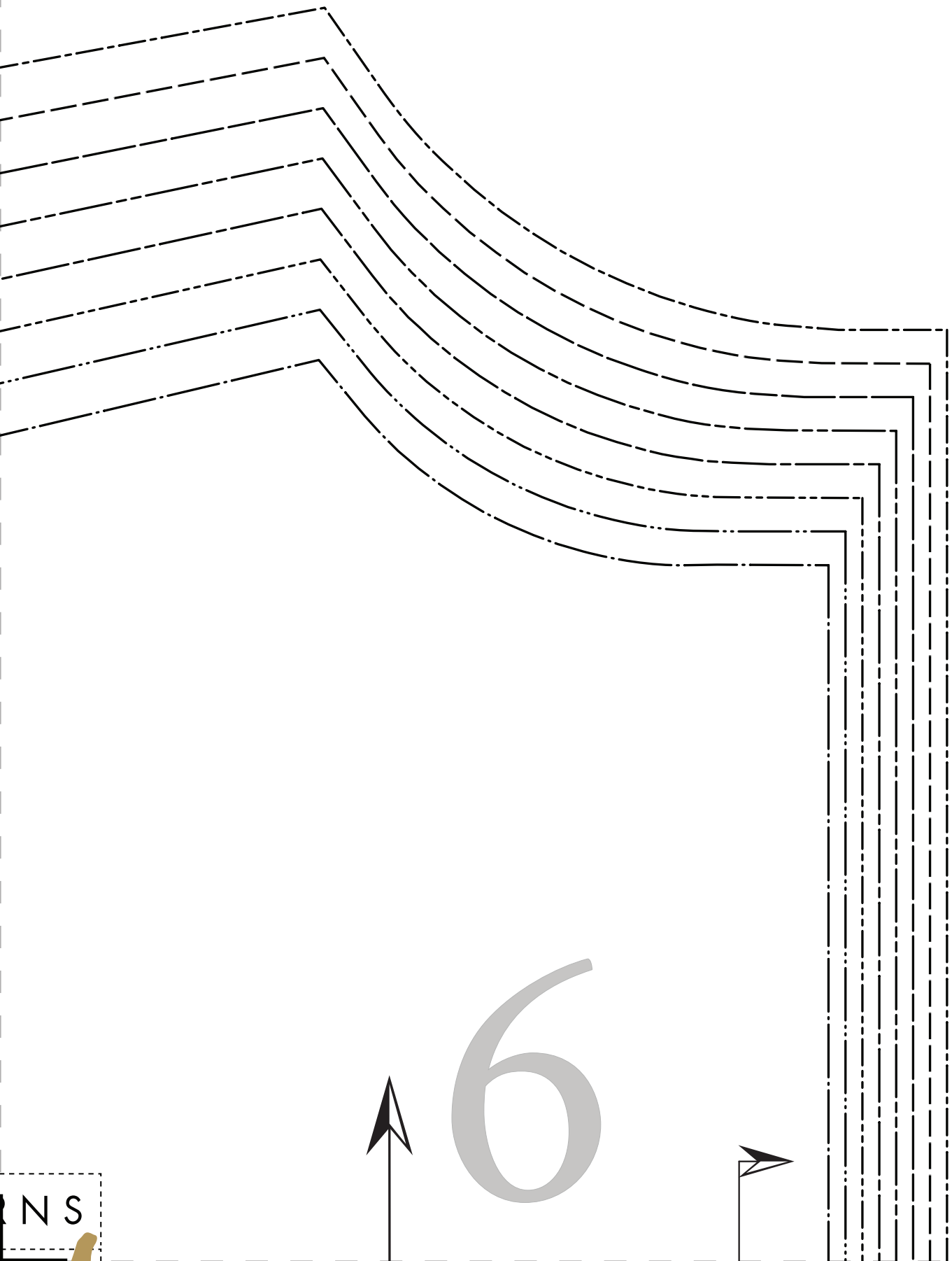
“The Boxwood Hoodie”
MDF218

POCKET
CUT 1



4





6



NS

ZE 0/2
ZE 4/6
ZE 8/10
ZE 12/14
ZE 16/18

FRONT
T 1 ON FOLD

Boxwood Hoodie”
MDF218

BoxwoodPattern

PATTERNS
BY
Boxwood
DESIGNER FABRICS
MDF218

GRAINLINE



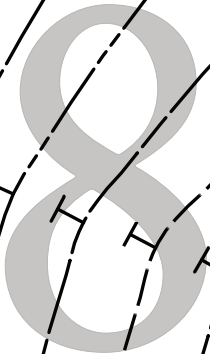
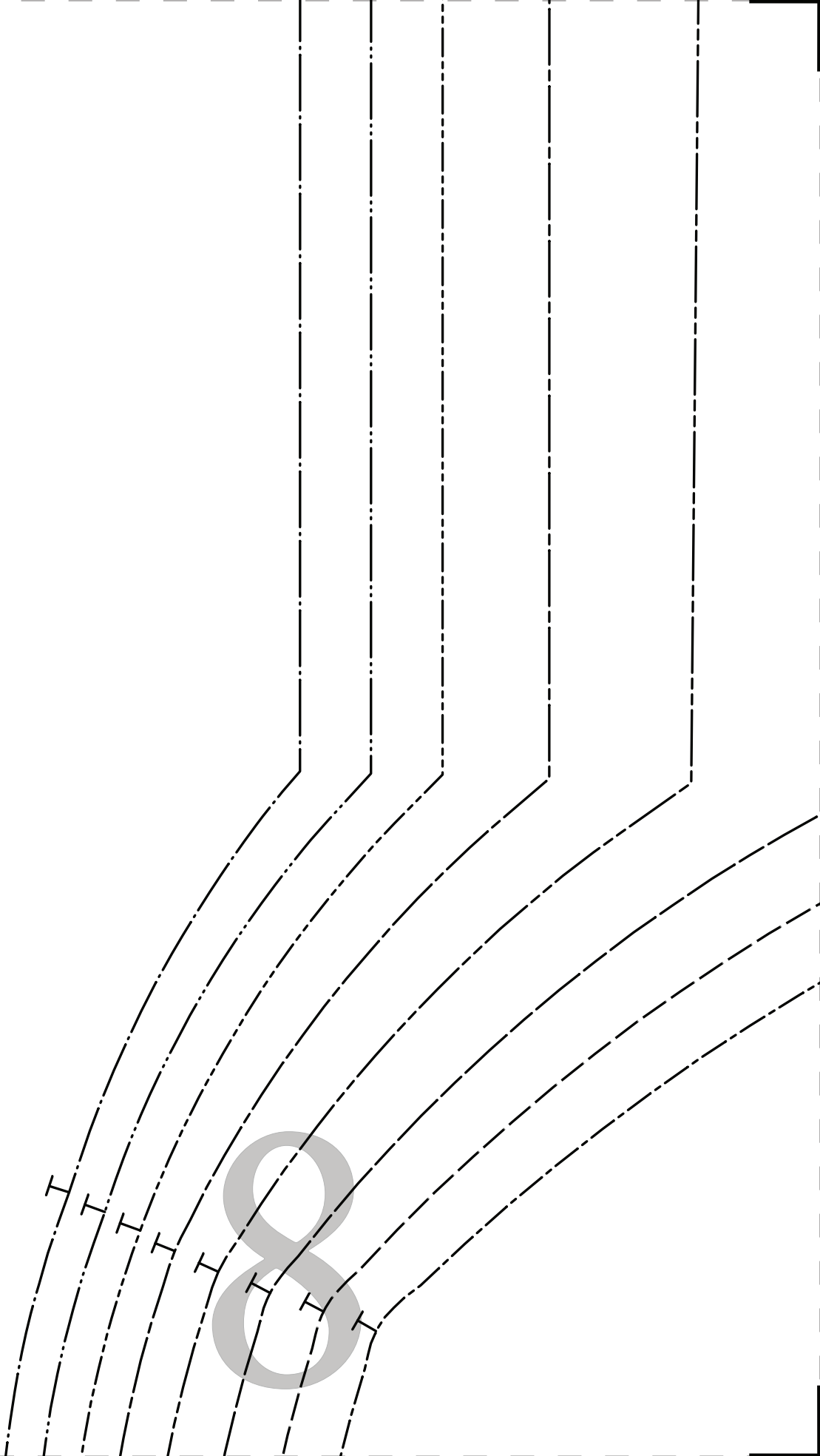
PLACE ON FOLD OF FABRIC

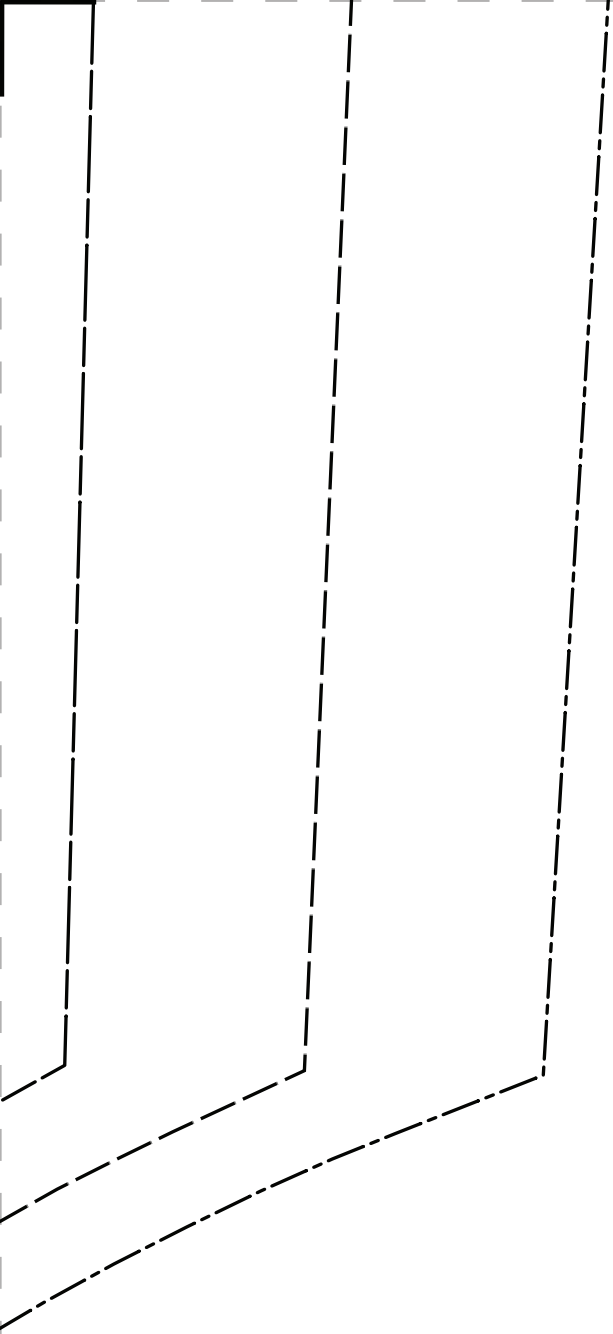


CU

“The Bo

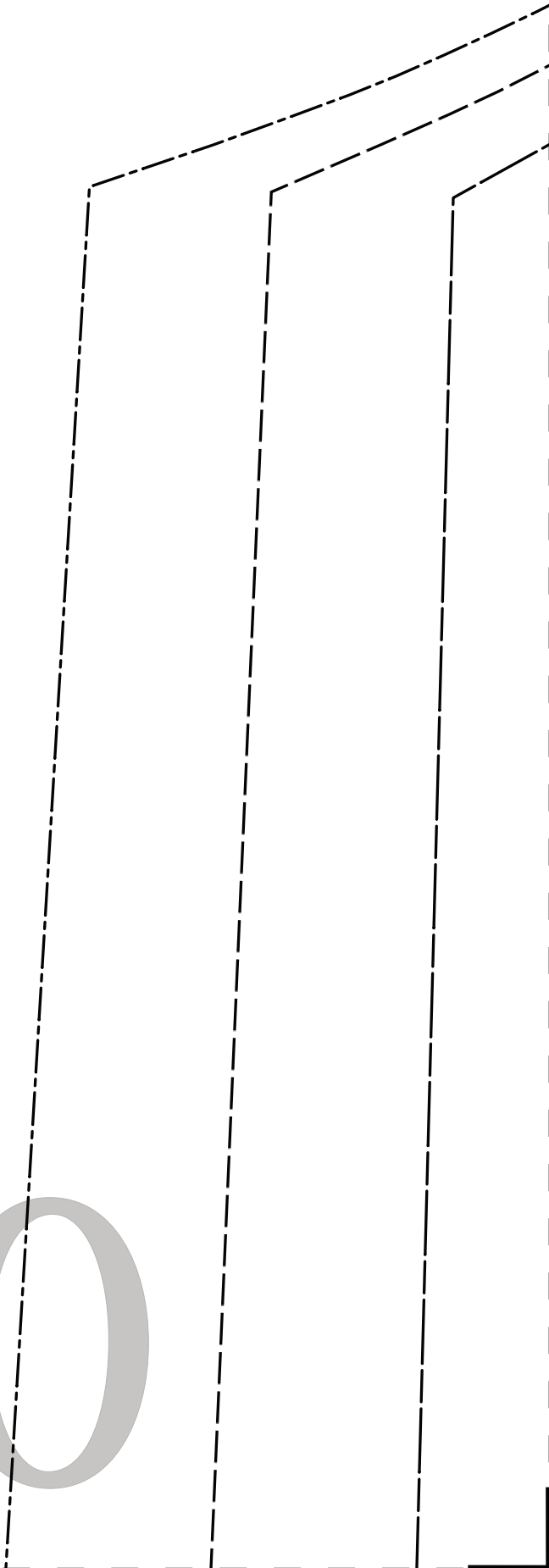
#Mood





9

10



MAC

DESIGNER FA

MDF21

#MoodBoxwood

“The Boxwood
MDF2

BAC
CUT 1 ON

SIZE 0/2

SIZE 4/6

SIZE 8/10

SIZE 12/14

SIZE 16/18

SIZE 20/22

SIZE 24/26

SIZE 28/30

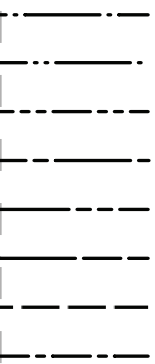
1 1



Pattern

"Hoodie"
18

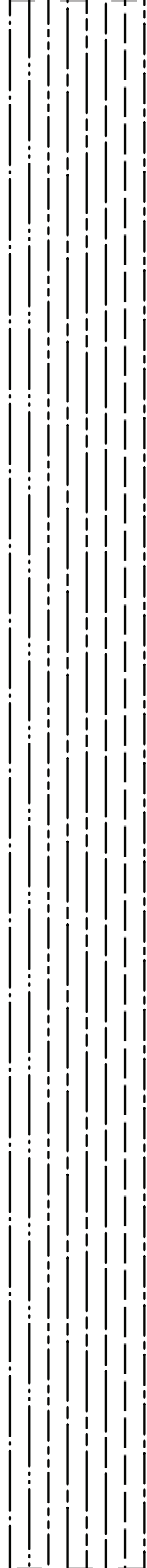
K
FOLD

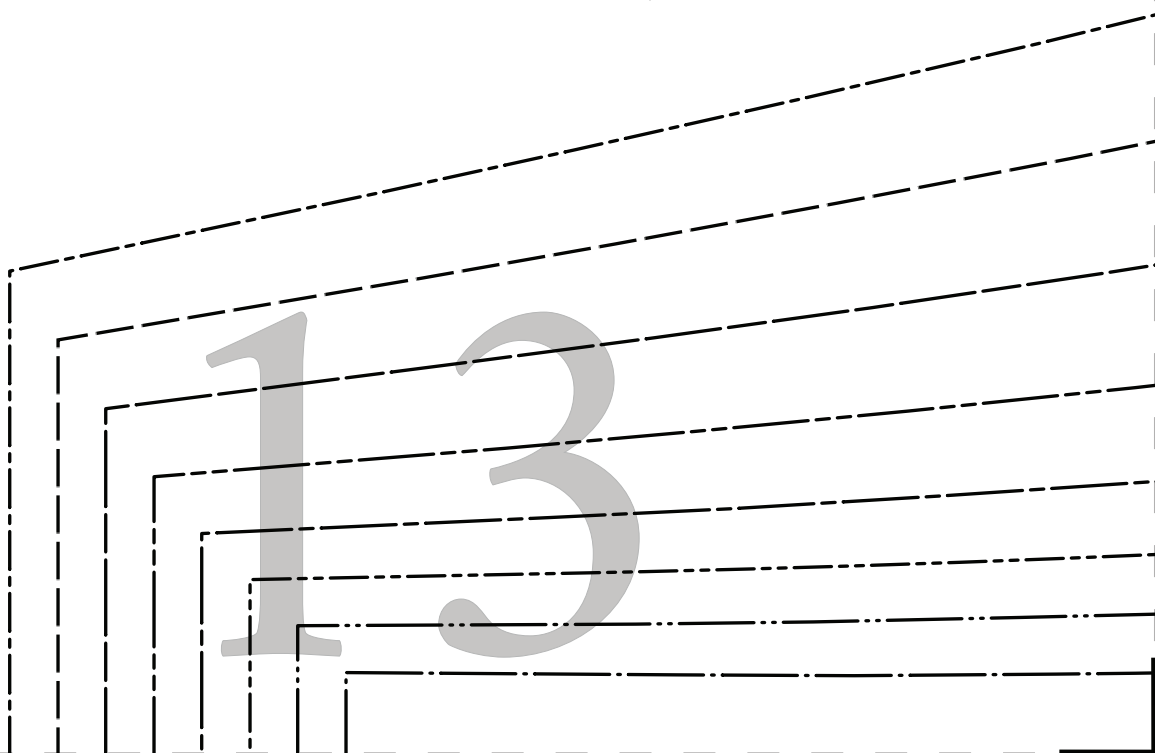
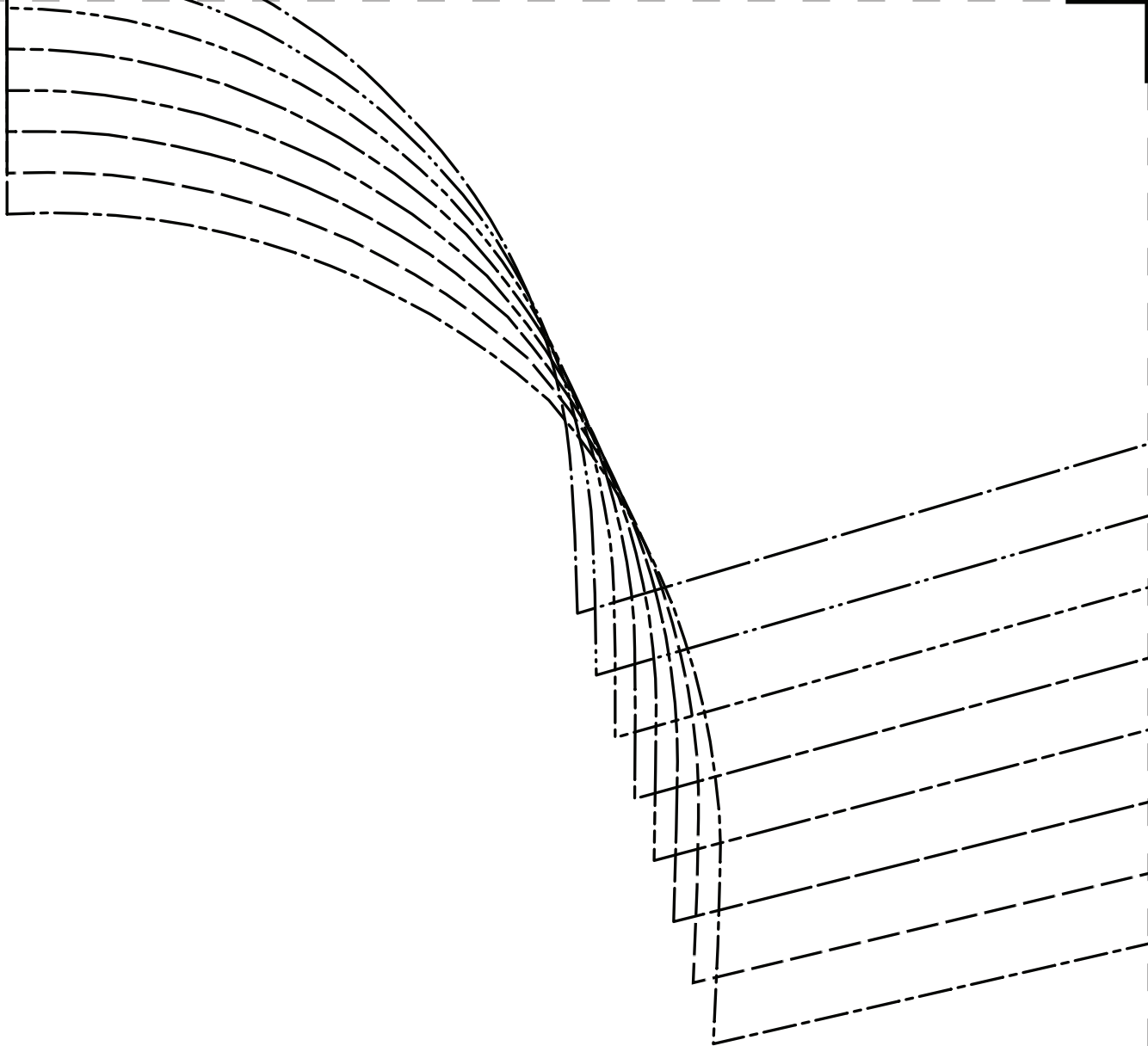


GRAINLINE

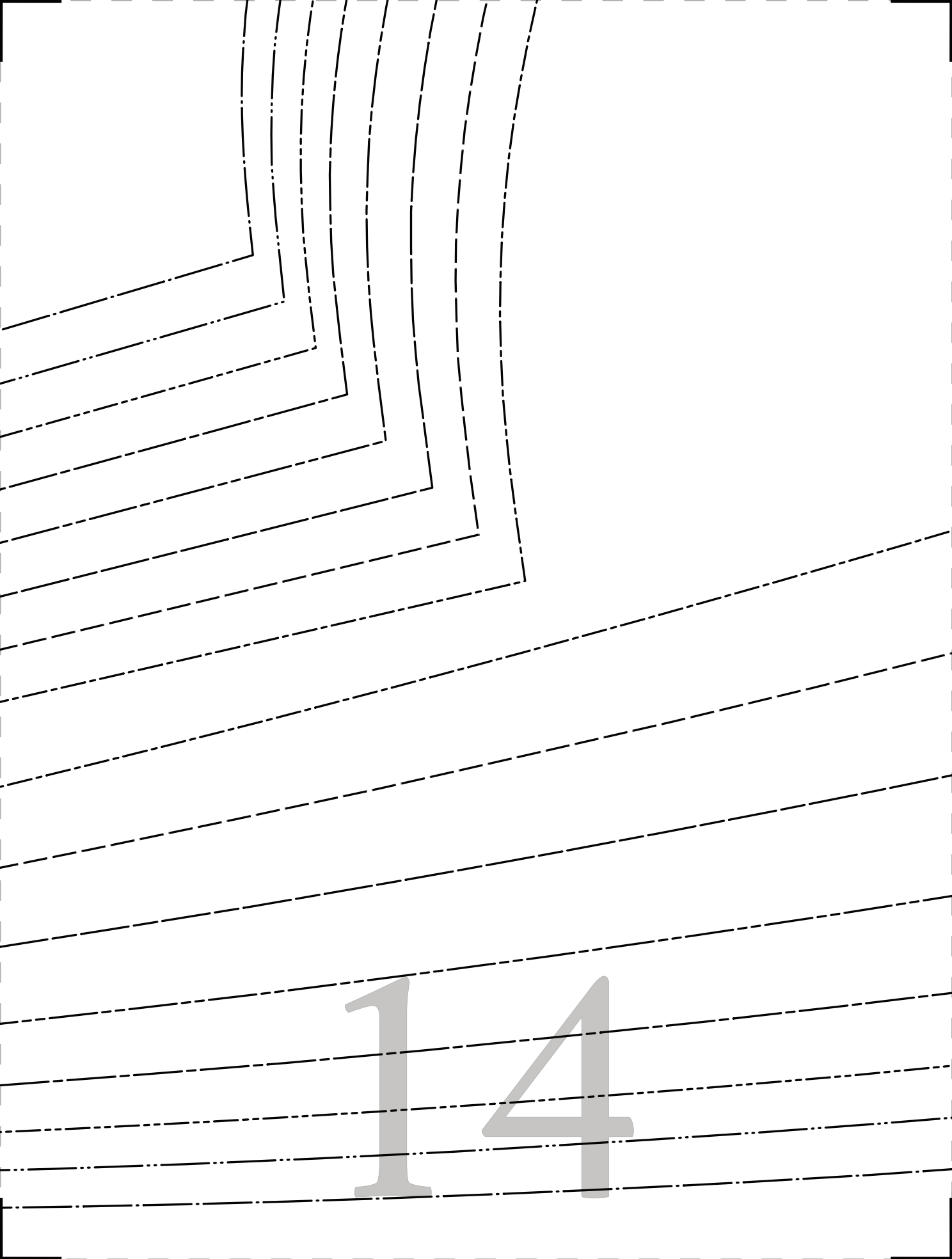
12

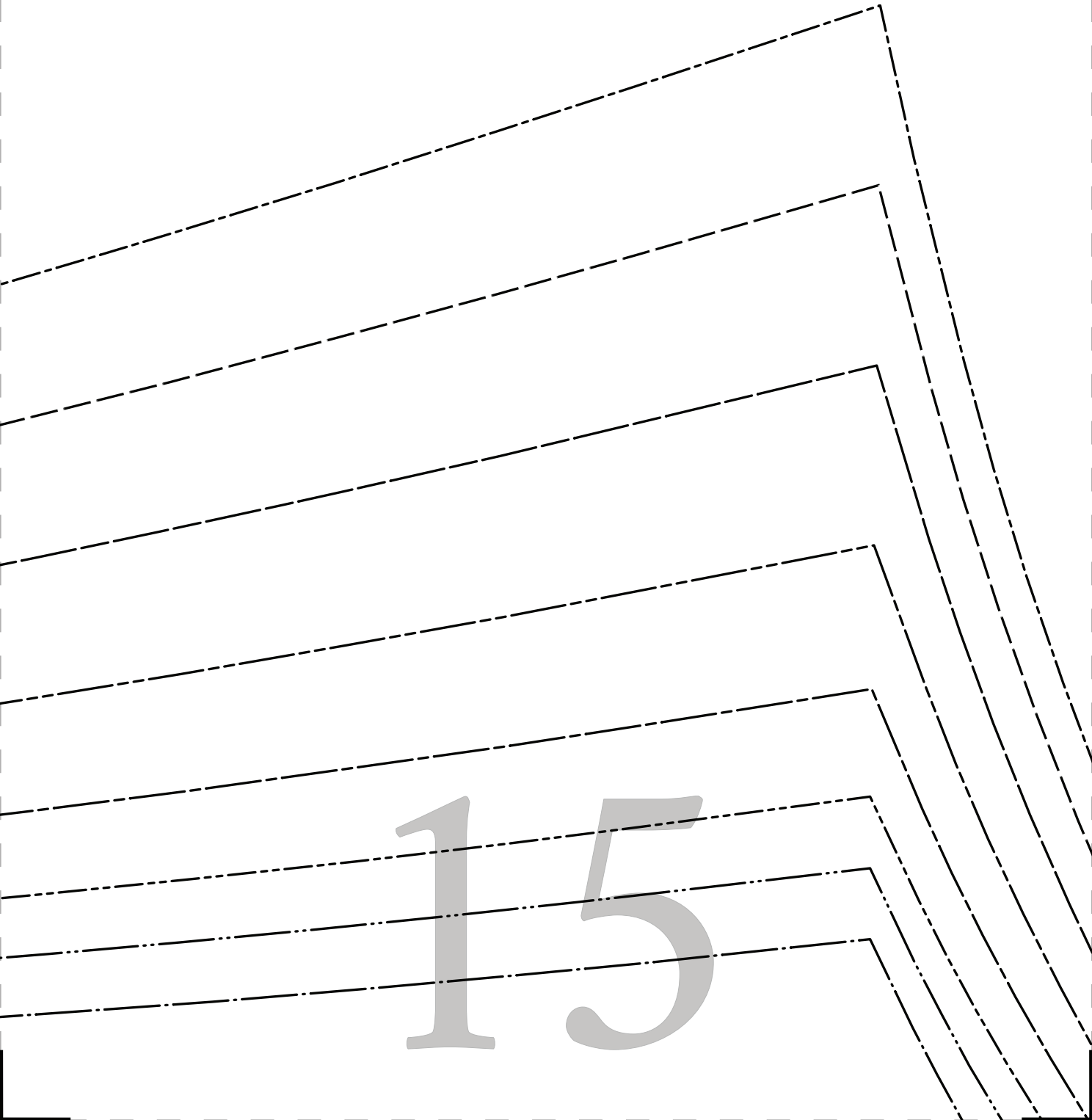
PLACE ON FOLD OF FABRIC





13

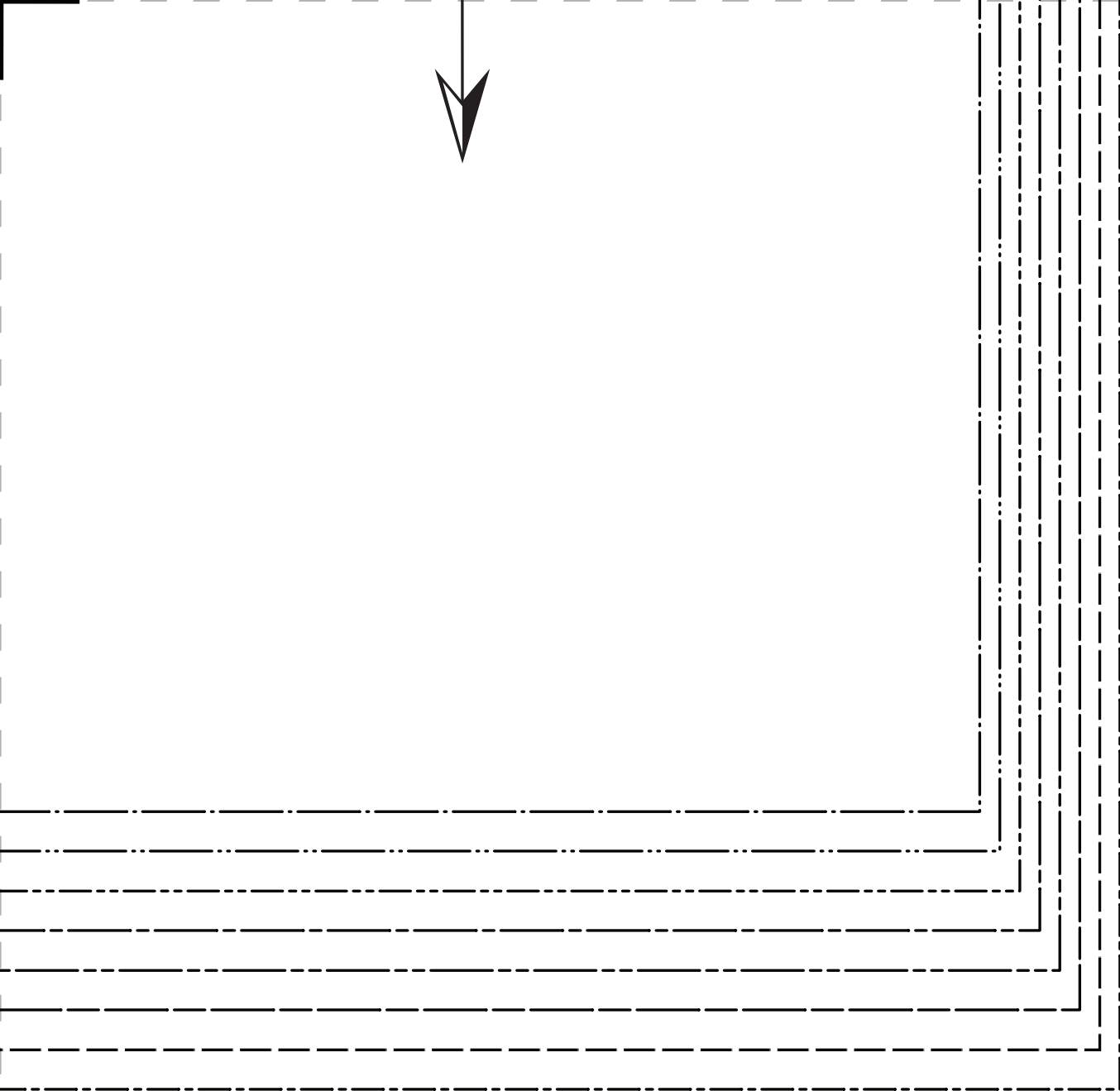




15

16

17



18

19

SLEEVE

CUT 2

FACE TO FACE

- SIZE 0/2
- SIZE 4/6
- SIZE 8/10
- SIZE 12/14
- SIZE 16/18
- SIZE 20/22
- SIZE 24/26
- SIZE 28/30

GRAINLINE

20

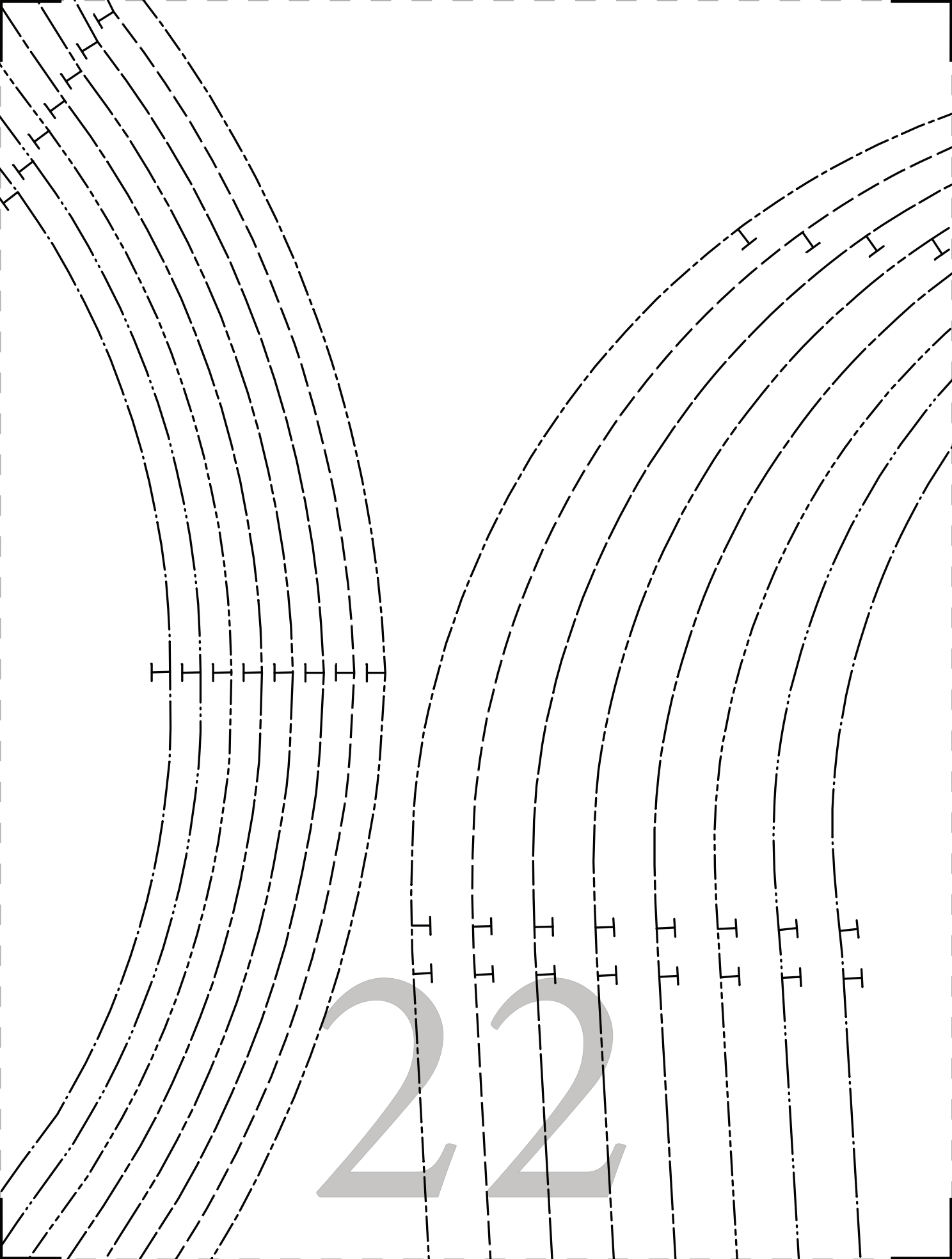




#MoodBoxwoodPattern

“The Boxwood Hoodie”
MDF218

21



2 2



#MoodBoxwoodPattern

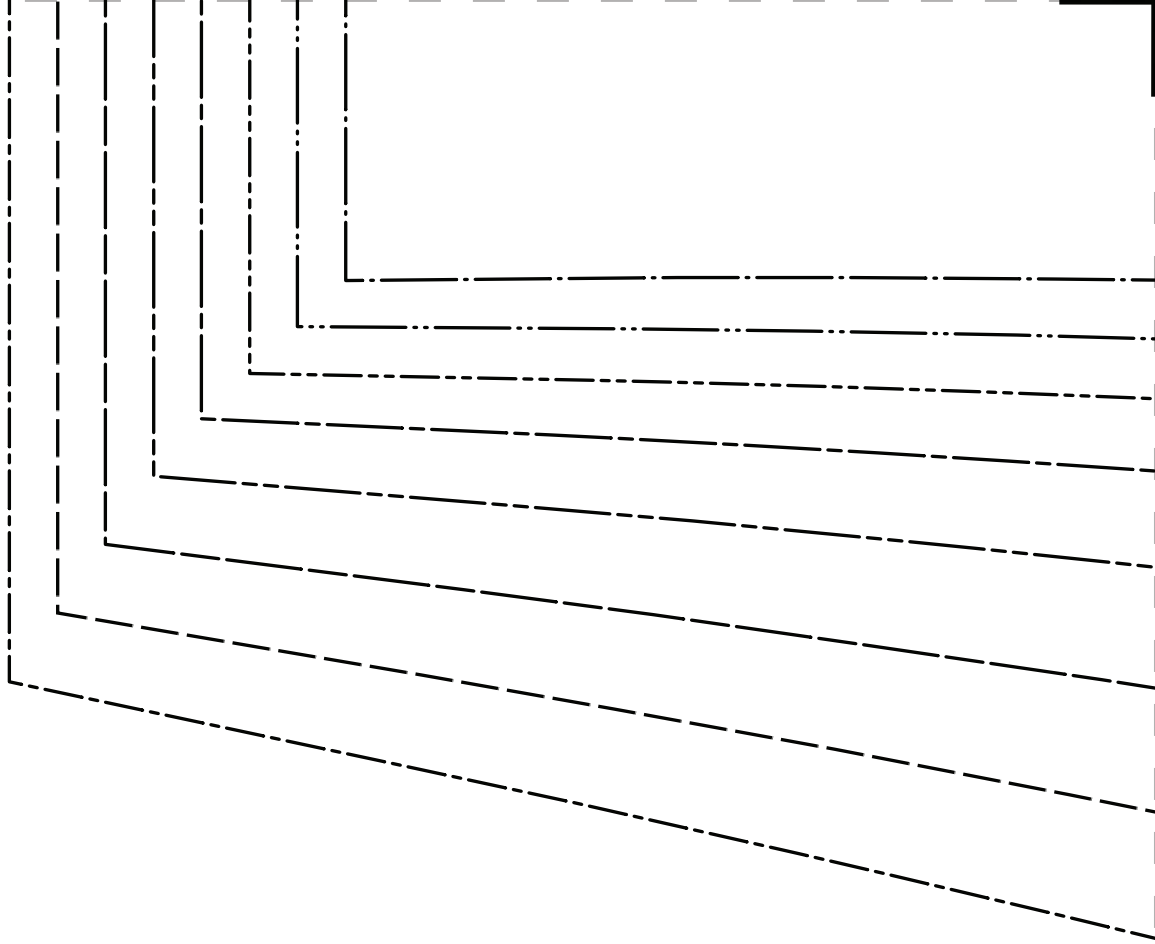
“The Boxwood Hoodie”
MDF218

23
HOOD
CUT 2
FACE TO FACE

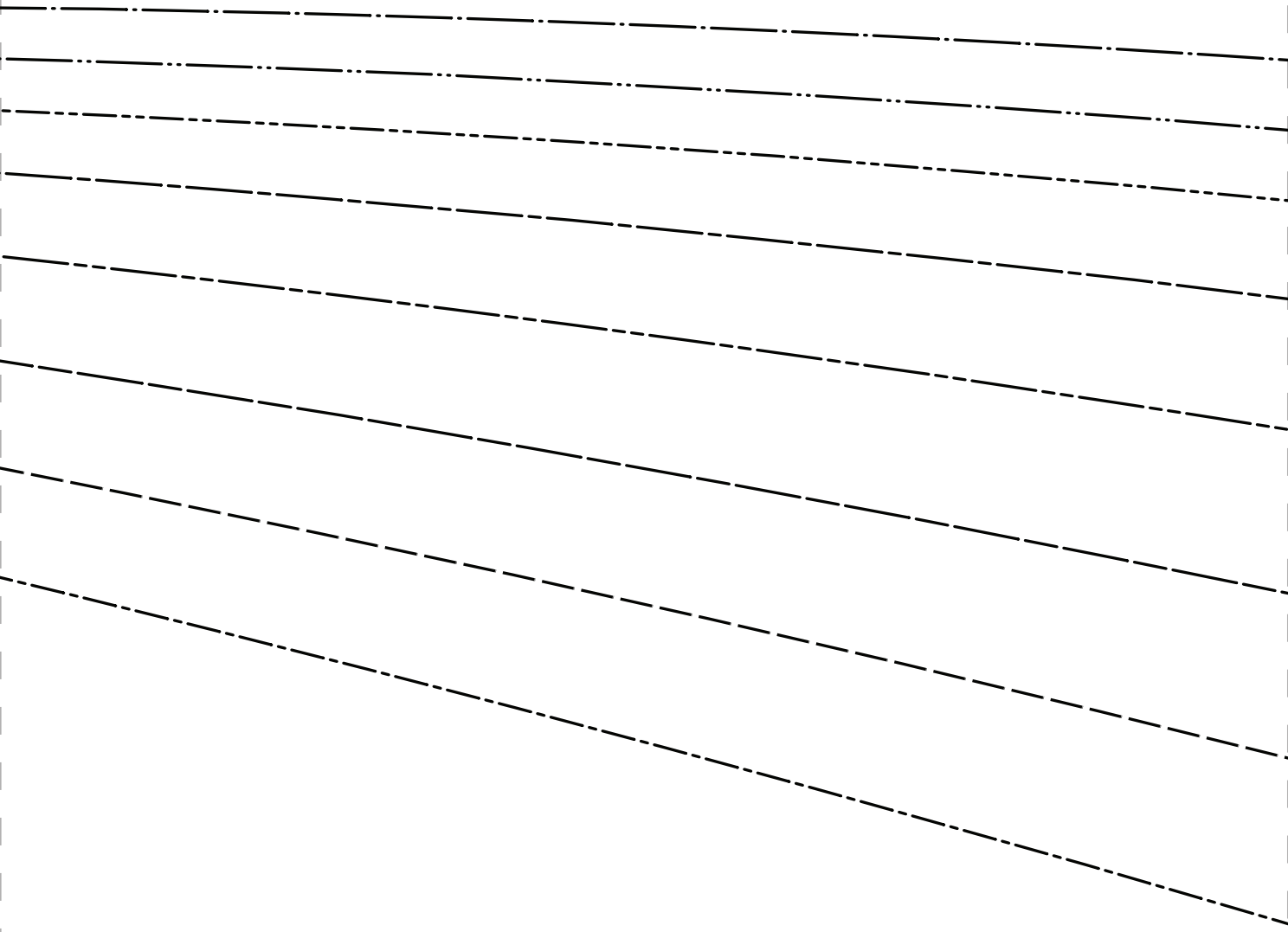
GRAINLINE



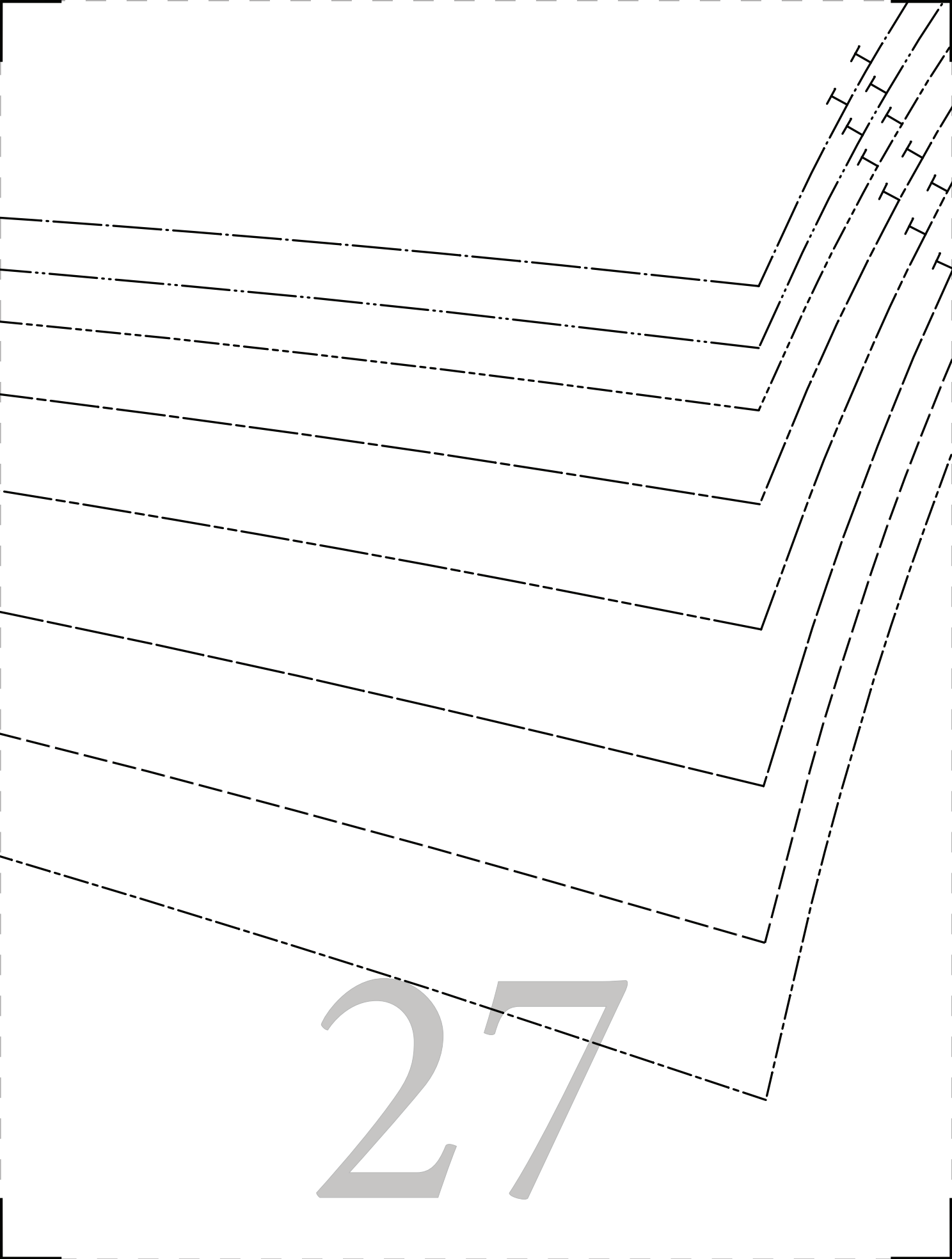
24



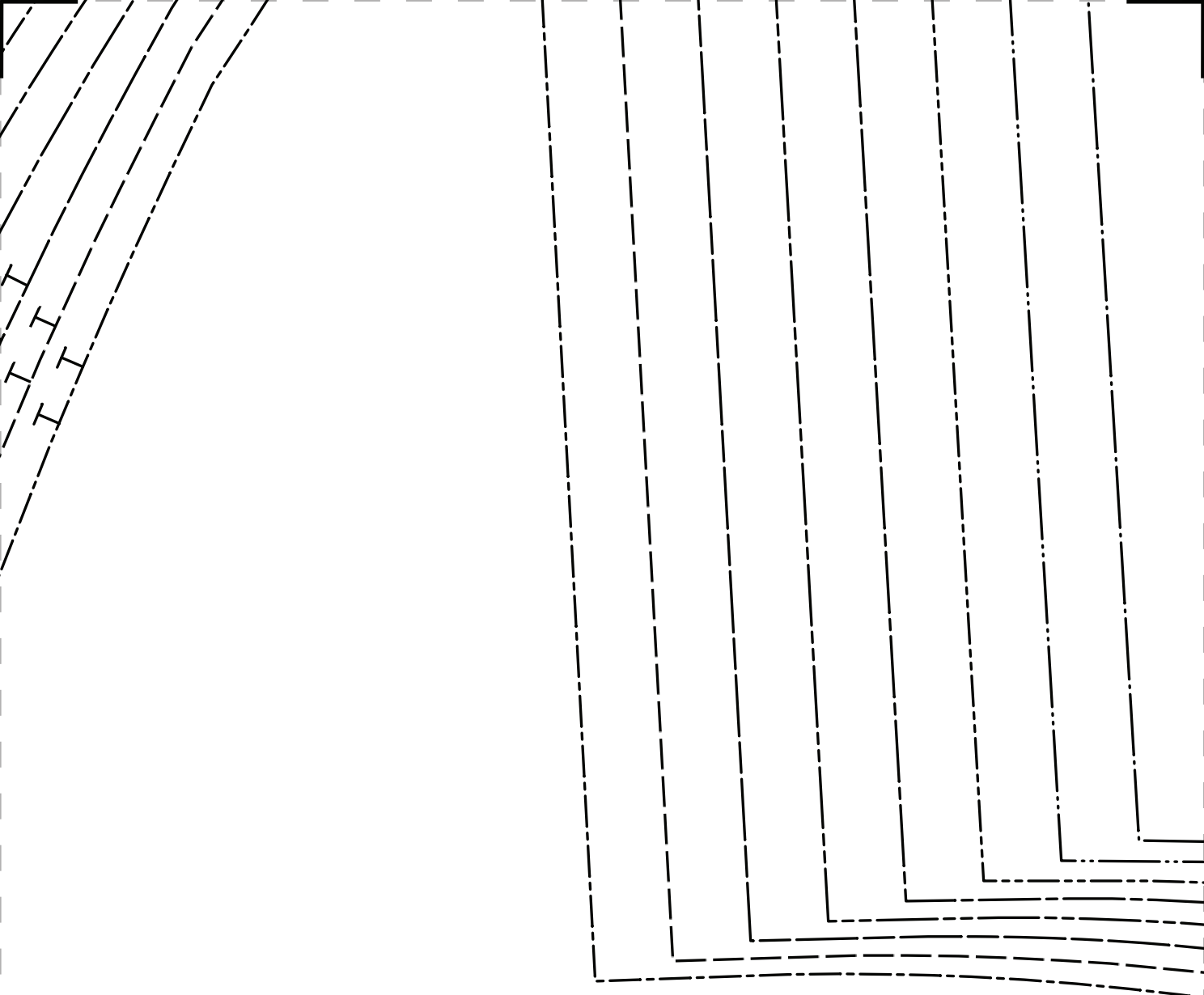
25



26



27



28

SIZE 0/2

SIZE 4/6

SIZE 8/10

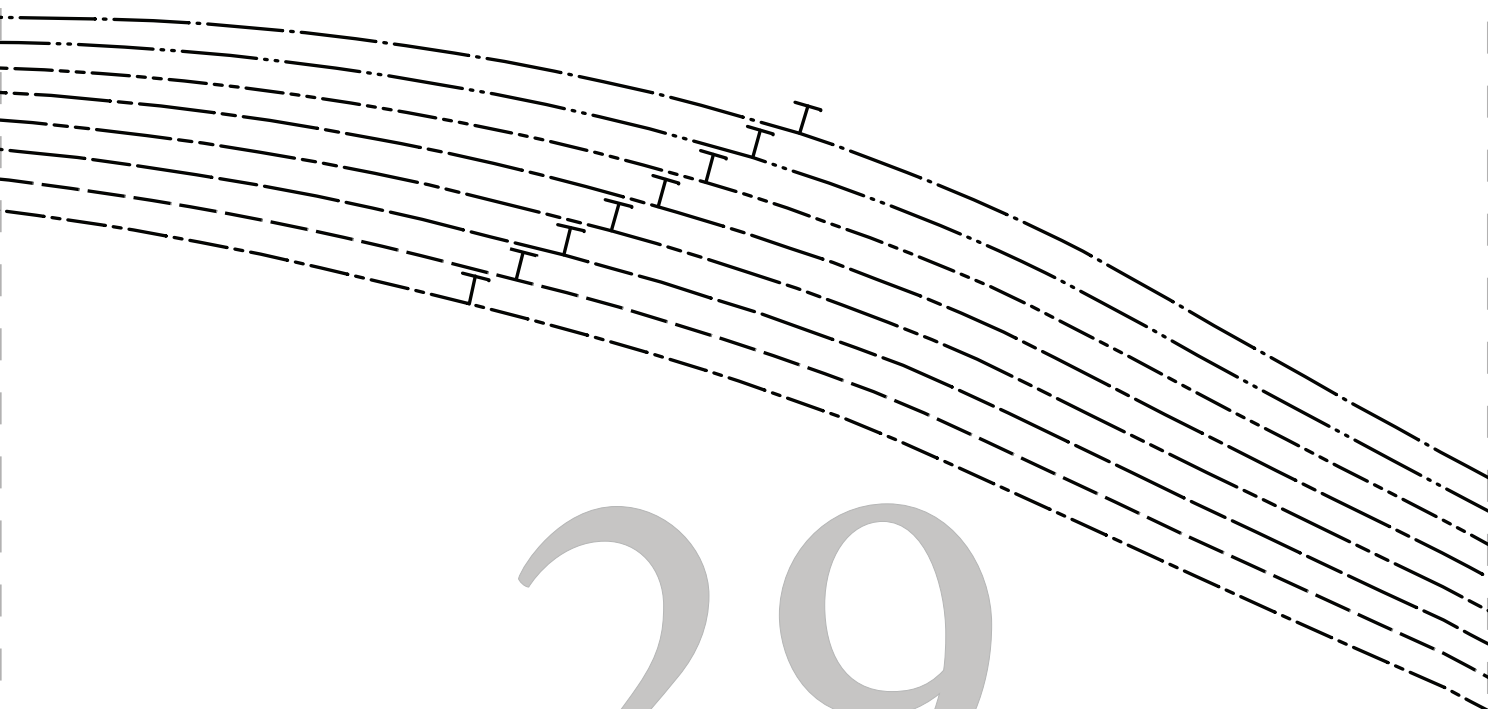
SIZE 12/14

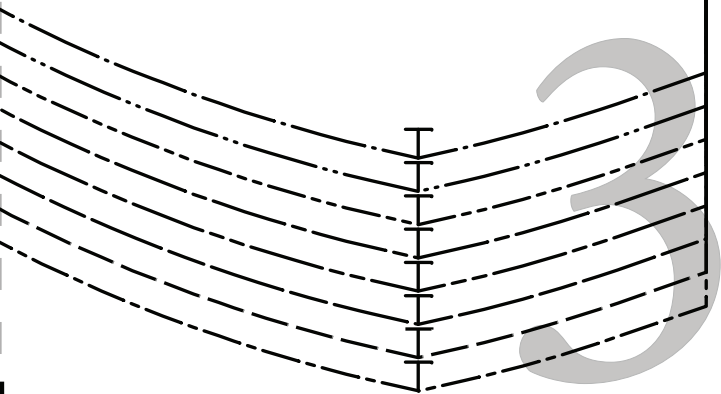
SIZE 16/18

SIZE 20/22

SIZE 24/26

SIZE 28/30





3

0